



**ANGLO-CHINESE JUNIOR COLLEGE**

**JC2 Preliminary Examination**

**Higher 2**

---

**GEOGRAPHY**

**9173/02**

Paper 2

**16 September 2025**

Insert

**3 hours**

---

**READ THESE INSTRUCTIONS FIRST**

This Insert contains all the Resources referred to in the questions.

---

This document consists of **8** printed pages.

## Resource 1 for Question 1

Land use map of the area adjacent to the Sungai Mandai Besar River, showing Sites A and B and the four infiltration sites A1, A2, B1 and B2



## Legend

	Unpaved footpath		Secondary forest
	Swamp & mudflats		Industrial land use
	Grass		

**Resource 2 for Question 1**

**Photographs of Sites A and B**

**Site A at the Rainbow Bridge over the Sungai Mandai Besar River**  
Channelised canal - concrete river banks and bed



**Site B at the stretch of the natural course of the Sungai Mandai Besar River  
before the river mouth**

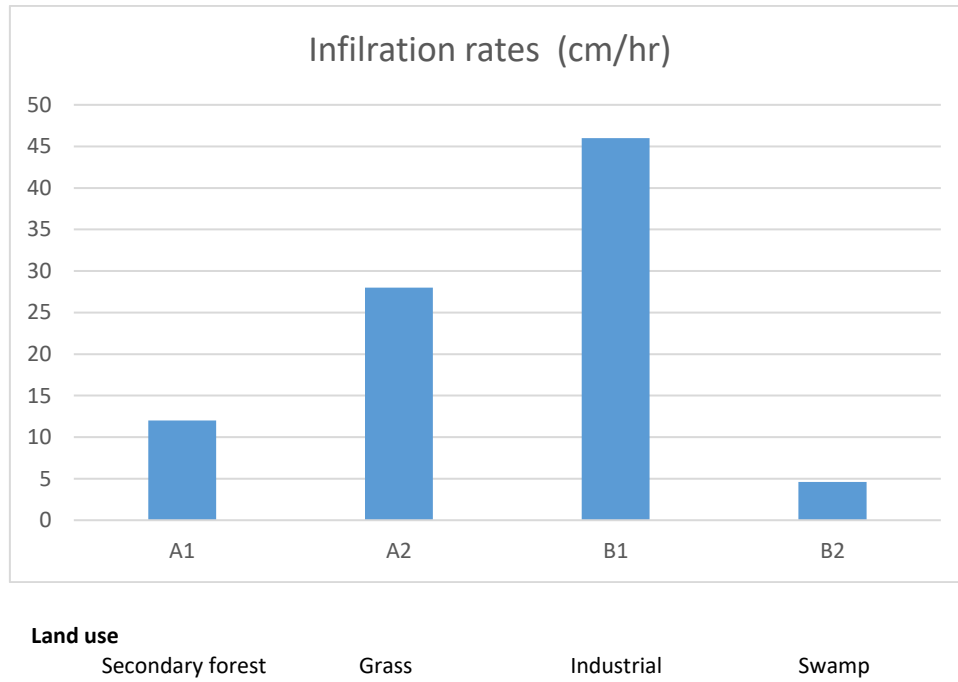


River banks and bed composed of silt and clay sediments



**Resource 3 for Question 1**

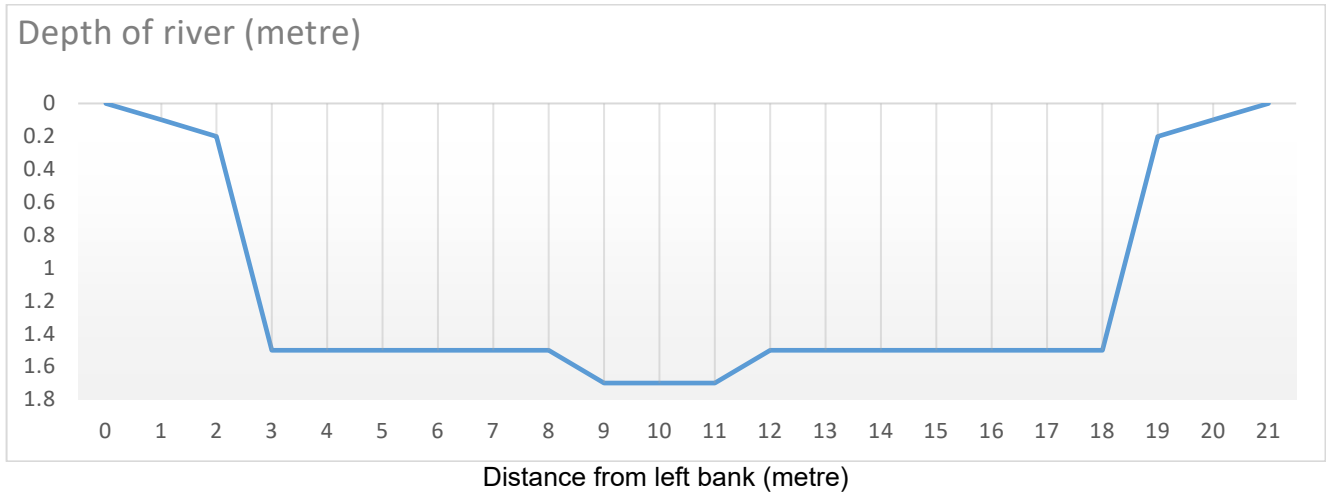
**Infiltration rates at each of the four sites around the Sungai Mandai Besar River**



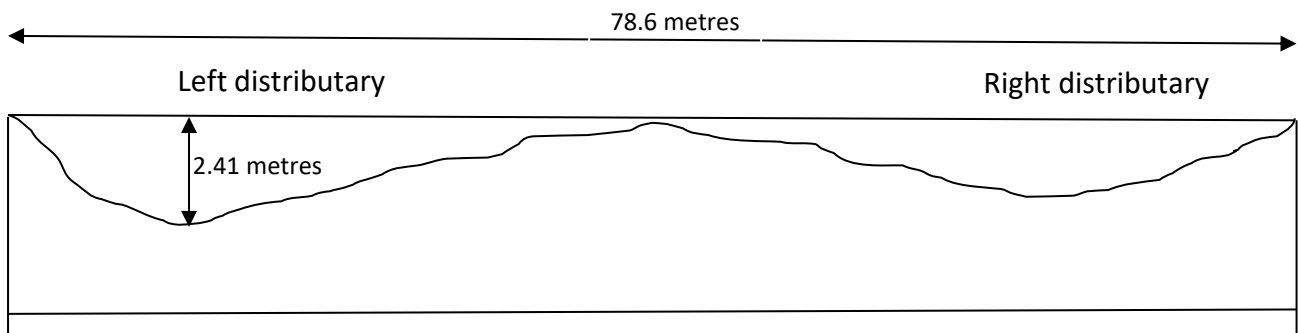
## Resource 4 for Question 1

## Findings of the investigation at Sites A and B

## River cross-section at Site A of the concretised Sungei Mandai Besar River



## Sketch of river cross-section at Site B with silt and clay banks and bed

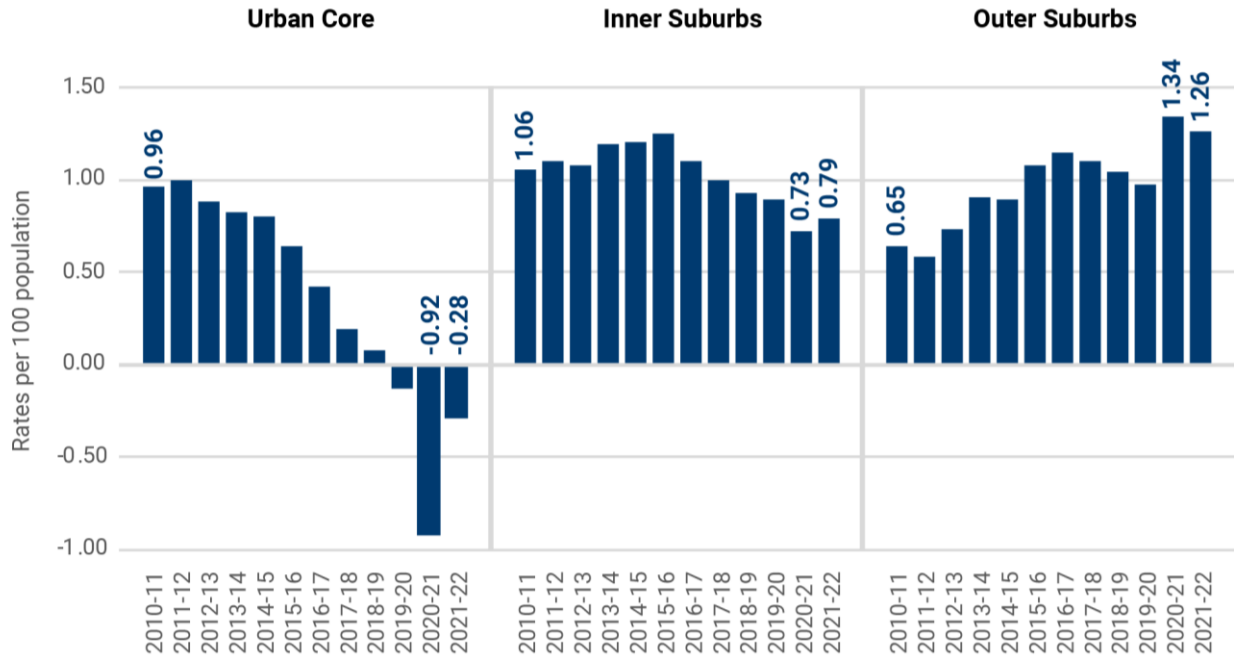


River variables (at bankfull discharge)	Site A	Site B
River width	20 metres	*78.6 metres
River depth	1.52 metres	*2.41 metres
Cross sectional area	30.4 square metres	*189.43 square metres
Wetted perimeter	25 metres	*113 metres
Hydraulic radius	1.22	*1.68
River velocity	1.15 metres per second	0.092 metres per second

\*Source of Site B data:  
National Park (2024) Environmental Impact Assessment for the proposed Mandai Mangrove & Mudflat Nature Park.

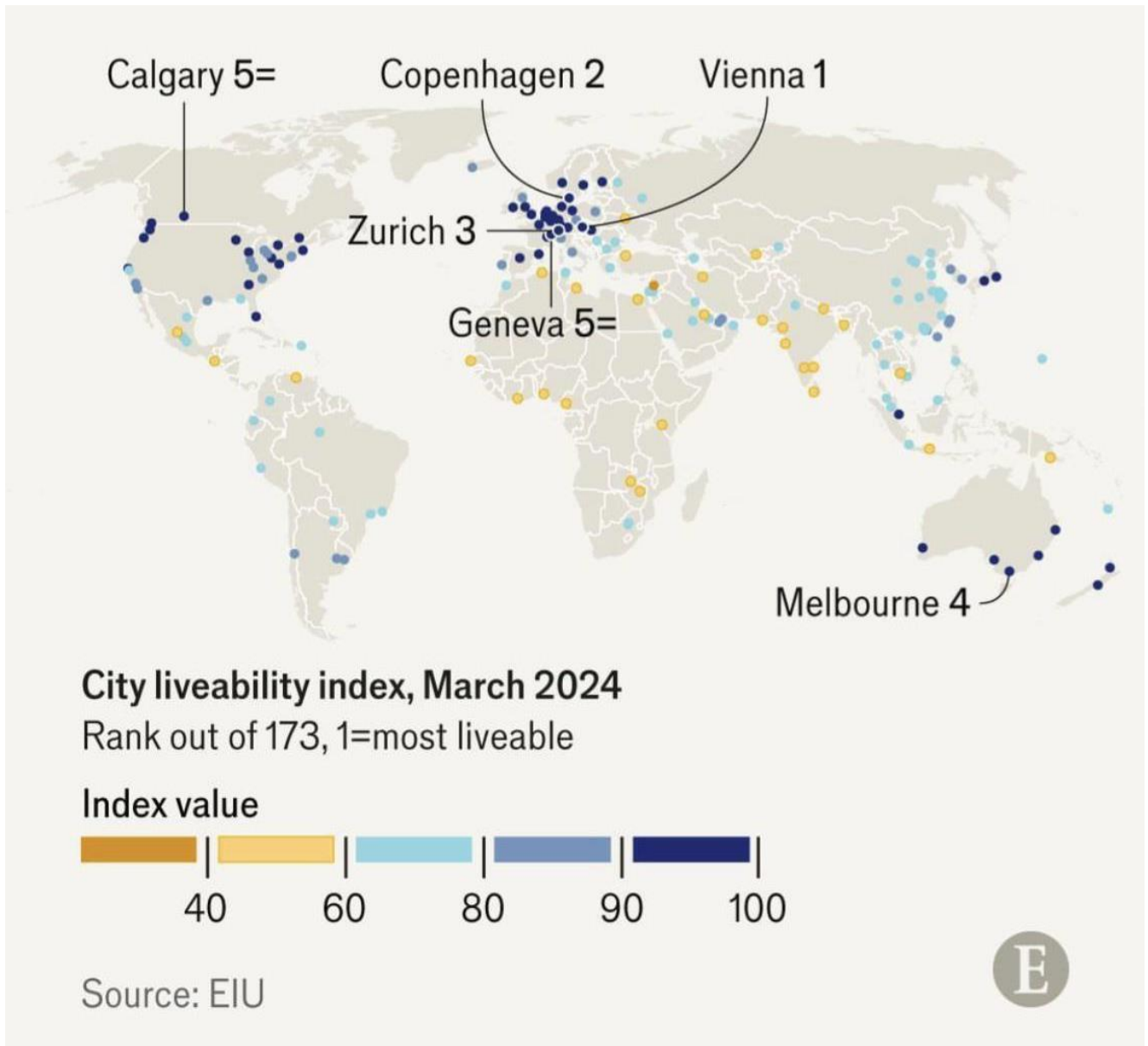
## Resource 5 for Question 2

## Annual growth rates for the urban core and suburbs in large metro areas from 2010-2022



## Resource 6 for Question 2

## City liveability index in 2024





## Resource 7 for Question 2

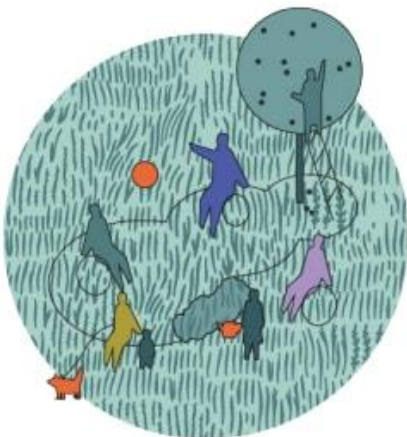
The four main themes the United Nations has identified to improve cities for women.



**Theme 1**  
Safety and security



**Theme 2**  
Justice and equity



**Theme 3**  
Health and wellbeing



**Theme 4**  
Enrichment and fulfilment